



# PGP MBA

## Triple Certification

*with Study Tour & Internships*



ISMS Group of Institutions

## Key Benefits of PGP MBA

- ▶ Triple Certification (MBA+PGP+International Certifications) for higher end placement
- ▶ Practical program, based on concept implementation & skill development
- ▶ Multiple internships
- ▶ Pre-placement opportunity
- ▶ Optional study tour to the United Kingdom / Dubai



## Activities @ISMS Pune



## International Certifications

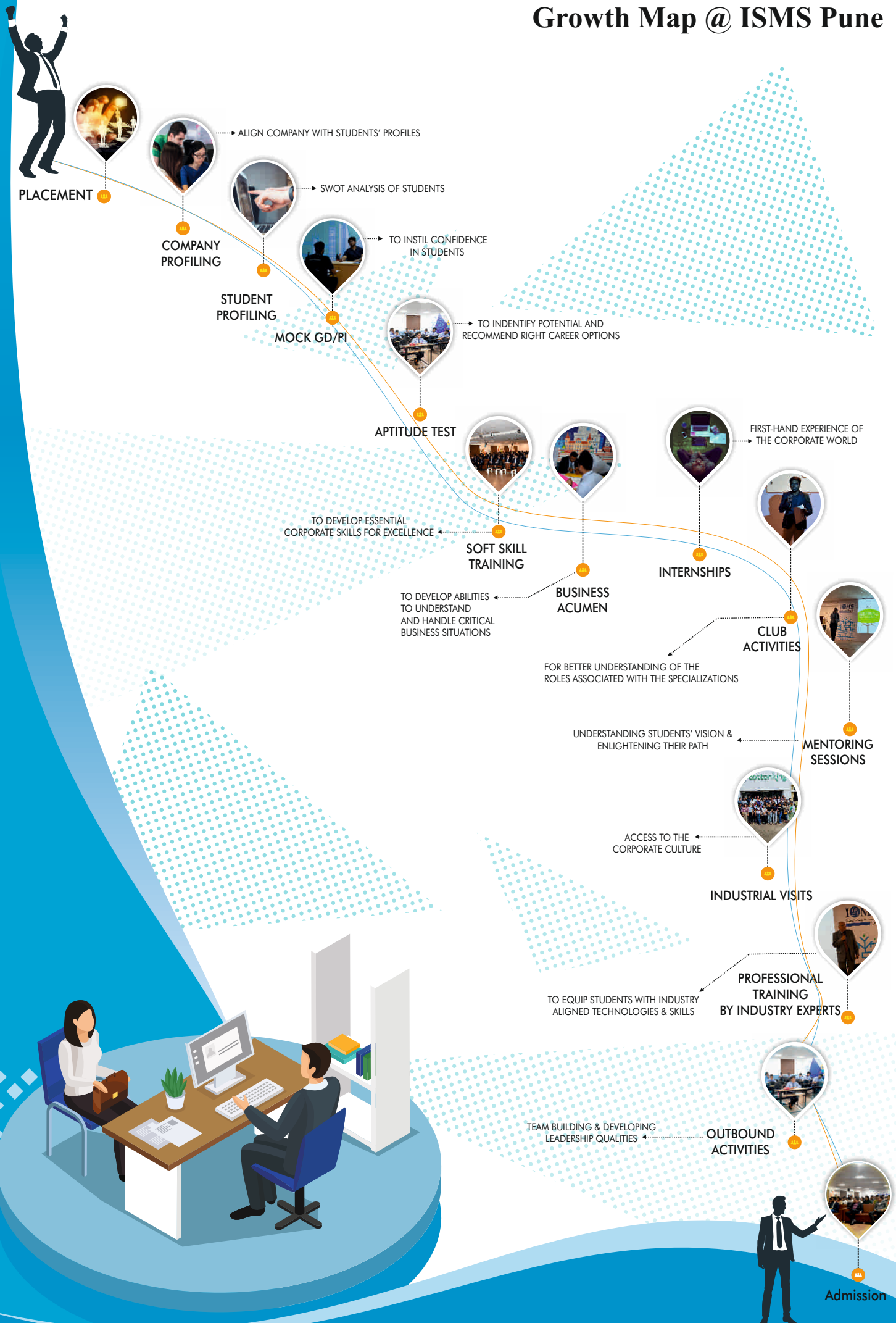
- UX Design
- Online Advertising & Social Media
- Resume, Networking & Interview Skill
- People Analytics & Reporting
- Product Management
- Digital Marketing Analytics
- Analysing Data With Excel
- Investment Banking & Finance
- Six Sigma
- Ai For Everyone
- Free Cashflow Analysis

## Employability / Skill Development Program





# Growth Map @ ISMS Pune



## Subjects Taught

### 1 Semester

- 6 Core Subjects
- 3 University Level Subjects

### 3 Semester

- 3 Core Subjects
- 3 University Level Subjects
- 1 Major Specialization
- 1 Minor Specialization

### 2 Semester

- 4 Core Subjects
- 3 University Level Subjects
- 2 Major Specialization

### 4 Semester

- 3 Core Subjects
- 3 University Level Subjects
- 1 Major Specialization
- 1 Minor Specialization

## Specialization Offered

### Major

- Marketing Management
- Financial Management
- Human Resource Management
- Business Analytics
- Operations & Supply Chain Management

### Minor

- Rural & Agribusiness Management
- Tourism & Hospitality Management
- Pharma & Healthcare Management
- International Business

(Please note that the specializations offered by the **Savitribai Phule Pune University** are subject to change at the university's discretion)

## Placement

100% placement opportunity\* upon completion of the program within a specific domain of specialization, with the possibility of receiving pre-placement offers during the summer internship. Earn and learn opportunities can be taken after completing summer internship. Complete guidance on how to prepare for an interview are given.



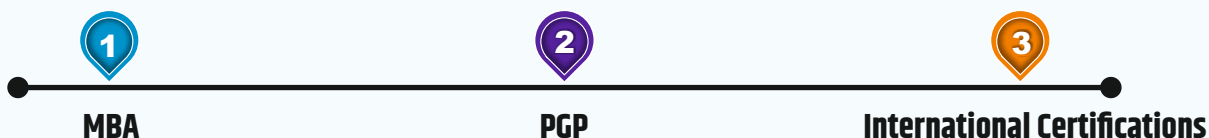
\*100% placement opportunity depends on academic performance and attendance.

## Objectives & Benefits of Triple Certifications:

The main objective of the program is to provide students with the necessary practical exposure they need to get placed in the corporate. This program consists of a unique learning methodology centered on case studies, projects and assignments that encourage students to think outside-the-box.

The Triple certifications not only assist students in higher-end placements, but also help them in becoming global leaders.

### Triple Certifications



#### International Exposure (Optional)

**Option 1:** 3 Weeks study tour to top UK universities. Including- Stay, meals, air ticket, participation in cultural activities, sightseeing, a module of strategic management certification. (Extra Charge will be applied, apart from fees)

**Option 2:** 4 weeks of internship in Mauritius. Including air ticket, work experience letter, accommodation and meals. (Extra Charge will be applied, apart from fees)

#### Admission fees

##### First Years Fee

Registration: Rs. 50,000/-

1<sup>st</sup> Instalment: Rs.50,000/-

2<sup>nd</sup> Instalment: Rs. 2,00,000/-

3<sup>rd</sup> Instalment: Rs. 1,50,000/-

##### Second Year

4<sup>th</sup> Instalment: Rs. 2,00,000/-

Total Fees  
6,50,000

YOUR  
**FUTURE  
BEGINS**  
HERE

## OUR TOP RECRUITERS (PARTIAL LIST)



For Admission Enquiry  
+91 7350 15 15 15 / 8796 15 15 15

### ISMS Group of Institutions, Pune

✉ info@ismspune.in  
🌐 www.ismspune.in



ISMS Global Education

Campus S.No 9/1/1, Wadgaon Budruk, Ambegaon, Pune - 411 041

Disclaimer- All information in the brochure is correct to the best of the Institute's knowledge and is provided solely for informational purposes. Courses, program content, and mode of delivery may change from time to time at the Institute's discretion in the interest of the students. All pictures and images shown are only for illustration purposes. ISMS does not guarantee/assure any student of Visa Clearance/Work Permit, and it is based on foreign country laws and policies, which may change without prior intimations.